



PRISON RAPE ELIMINATION ACT ANNUAL REPORT - 2021

PREA was established and signed into law in 2003 by President George Bush. PREA addresses the problem of sexual abuse and sexual harassment of both adults and juveniles in the custody of U.S. correctional facilities, including community confinement facilities. Major provisions address the development of standards for the detection and prevention of prison rape. Community Counseling and Correctional Services has adopted a ZERO TOLERANCE policy on any sexual misconduct/sexual abuse or sexual harassment of in our facilities. These measures are being accomplished through new policies, procedures and training of all residents, staff and volunteers.

The Prison Rape Elimination Act (PREA) requires that each facility collect and review data "...in order to assess and improve the effectiveness of sexual abuse prevention, detection, and response policies, practices, and training." (28 CFR §115.88, 115.288 and 115.388) This report works to meet these standards as well as:

- Identify corrective action taken to address any problem areas in the past year.
- Compare PREA related data to previous year's data and
- Identify problem areas to be addressed in the future.

*Definitions & Acronyms:

Sexual Harassment: Repeated verbal comments or gestures of a sexual nature to a resident by another resident, staff member, contractor or volunteer, including demeaning references to gender, sexually suggestive or derogatory comments about body or clothing, or obscene language or gestures.

Sexual Misconduct/Abuse: Any of the following acts toward a resident in custody by another resident, staff member, contractor or volunteer with or without consent: contact between genitals, between mouth and genitals, penetration of genitals or anus by hand, finger, object or other instrument; intentional touching/contact, either directly or through clothing of the genital, anus, groin, breast, inner thigh or the buttocks that is unrelated to official duties or where a resident, staff member, contractor or volunteer has the intent to abuse, arouse or gratify sexual desire; any display by a resident, staff member, contractor or volunteer of his/her uncovered genitalia, buttocks or breast in the presence of a resident or voyeurism by a resident, staff member, contractor or volunteer.

Substantiated: The allegation is supported by sufficient factual evidence.

Unsubstantiated: The allegation is not supported by sufficient factual evidence.

Undetermined: The complainant withdraws the complaint or allegation, cannot be located or is uncooperative with the investigation.

Unfounded: The allegation is false or has no validity.

CCCS Inc. embraced the principles of eliminating sexual misconduct and sexual harassment years before the PREA standards had been established. CCCS Inc. established new policies and procedures to meet and where possible, exceed PREA standards. This includes strong Zero Tolerance, Retaliation and Investigation policies and procedures. The Zero Tolerance policy is for the protection of both residents and staff and for the elimination of sexual misconduct within our facilities. The Retaliation procedure is to protect an individual from retaliation after reporting a violation. The Investigation procedure is used to determine if allegations are founded or not. Investigations are also used to determine if changes are needed to be made in policies, procedures, facility, staffing, personnel assignments or supervision. All allegations are taken seriously and investigated thoroughly.

CCCS Inc. is committed to providing a safe and healthy environment for staff and residents. Prevention of sexual assault, abuse or misconduct, and harassment in a CCCS Inc. facility is paramount. CCCS Inc. has a zero tolerance policy toward sexual assault, sexual abuse or misconduct, and/or sexual harassment of residents by either other residents or staff.

Several community Sexual Assault Trauma Centers have partnered with the CCCS Inc. facilities to provide excellent access to community providers who can assist when issues concerning sexual assault or abuse are detected.

PREA orientation is provided to residents who enter CCCS Inc. facilities. Residents are informed of their right to be free from sexual abuse and sexual harassment. Additionally, residents are informed about CCCS Inc.'s Zero Tolerance policy. In addition to orientation, each resident who spends more than 10 days at CCCS Inc. facility receives additional education on the Prison Rape Elimination Act.

CCCS Inc. has completed PREA audits at each of its facilities and all facilities have been certified as PREA Compliant. Each program's PREA audit report is available and accessible to the public through the CCCS web site, (cccscorp.com).

The number of PREA related investigations in 2021 was 13 compared to 11 to 2020. This represents an 18% increase in PREA related allegations. Compared to 3 substantiated allegations occurring in 2020, there was a 25% decrease in substantiated reports in 2021 with 4 total substantiated allegations. Of the substantiated allegations occurring in 2021, 2 of the 4 substantiated allegations were of inmate on inmate sexual harassment and the other two were staff on inmate sexual misconduct. The increase in 2021 may be due to COVID as facilities faced lockdowns for several weeks or months and the number of staff was limited due to COVID restrictions.

*Definitions paraphrased from the Department of Justice PREA Standards definitions.

Data Snapshot

YEAR	ALLEGATIONS	SUBSTANTIATED
2021	13	4
2020	11	3
2019	22	8
2018	20	6
2017	28	6
2016	20	3

2021 PREA Data: Community, Counseling, and Correctional Services, Inc.

CCCS PROGRAM	ALLEGATIONS	UNSUBSTANTIATED	UNFOUNDED	SUBSTANTIATED	PENDING
Bismarck Transition Center	3	1	1	1	0
Butte Pre-Release/ Women's Transition Center	2	0	0	2	0
CCP Butte	1	1	0	0	0
Gallatin County Re-Entry Program	0	0	0	0	0
Martin Hall Juvenile Facility	2	2	0	0	0
Nexus	2	2	0	0	0
S.T.A.R.T.	1	0	1	0	0
Watch East	0	0	0	0	0
Watch West and CCP West	2	1	0	1	0
Total	13	7	1	4	0

2020 PREA Data: Community, Counseling, and Correctional Services, Inc.

CCCS PROGRAM	ALLEGATIONS	UNSUBSTANTIATED	UNFOUNDED	SUBSTANTIATED	PENDING
Bismarck Transition Center	2	0	2	0	0
Butte Pre-Release/ Women's Transition Center	2	1	0	1	0
CCP Butte	0	0	0	0	0
Gallatin County Re-Entry Program	0	0	0	0	0
Martin Hall Juvenile Facility	0	0	0	0	0
Nexus	5	2	2	1	0
S.T.A.R.T.	1	0	1	0	0
Watch East	0	0	0	0	0
Watch West and CCP West	1	0	0	1	0
Total	11	3	5	3	0

2019 PREA Data: Community, Counseling, and Correctional Services, Inc.

CCCS PROGRAM	ALLEGATIONS	UNSUBSTANTIATED	UNFOUNDED	SUBSTANTIATED	PENDING
Bismarck Transition Center	5	3	1	1	0
Butte Pre-Release/ Women's Transition Center	1	1	0	0	0
CCP Butte	0	0	0	0	0
Gallatin County Re-Entry Program	0	0	0	0	0

Martin Hall Juvenile Facility	4	0	3	1	0
Nexus	3	0	2	1	0
S.T.A.R.T.	1	0	1	0	0
Watch East	1	0	1	0	0
Watch West and CCP West	7	1	1	5	0
Total	22	5	9	8	0

2018 PREA Data: Community, Counseling, and Correctional Services, Inc.

CCCS PROGRAM	ALLEGATIONS	UNSUBSTANTIATED	UNFOUNDED	SUBSTANTIATED	PENDING
Bismarck Transition Center	4	1	2	0	1
Butte Pre-Release/ Women's Transition Center	2	0	0	2	0
CCP Butte	2	1	0	1	0
Gallatin County Re-Entry Program	0	0	0	0	0
Martin Hall Juvenile Facility	6	4	2	0	0
Nexus	0	0	0	0	0
S.T.A.R.T.	4	1	2	1	0
Watch East	0	0	0	0	0
Watch West and CCP West	2	0	0	2	0
Total	20	7	6	6	1

2017 PREA Data: Community, Counseling, and Correctional Services, Inc.

CCCS PROGRAM	ALLEGATIONS	UNSUBSTANTIATED	UNFOUNDED	SUBSTANTIATED	PENDING
Bismarck Transition Center	10	3	6	1	0
Butte Pre-Release/ Women's Transition Center	4	1	1	2	0
CCP Butte	0	0	0	0	0
Gallatin County Re-Entry Program	0	0	0	0	0
Martin Hall Juvenile Facility	3	1	2	0	0
Nexus	0	0	0	0	0
S.T.A.R.T.	7	2	4	1	0
Watch East	1	0	0	1	0
Watch West and CCP West	3	1	1	1	0
Total	28	8	14	6	0

2016 PREA Data: Community, Counseling, and Correctional Services, Inc.

CCCS PROGRAM	ALLEGATIONS	UNSUBSTANTIATED	UNFOUNDED	SUBSTANTIATED	PENDING
Bismarck Transition Center	8	3	4	1	0
Butte Pre-Release/ Women's Transition Center	6	1	3	2	0
CCP Butte	1	0	1	0	0
Gallatin County Re-Entry Program	0	0	0	0	0
Martin Hall Juvenile Facility	0	0	0	0	0
Nexus	1	0	1	0	0
S.T.A.R.T.	2	1	1	0	0
Watch East	1	0	1	0	0
Watch West and CCP West	1	0	1	0	0
Total	20	5	12	3	0

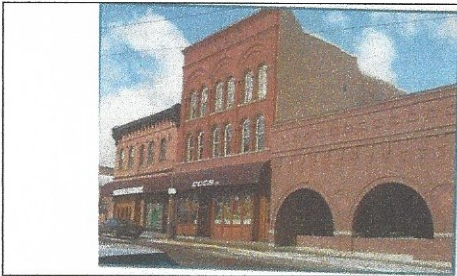


BUTTE PRE-RELEASE CENTER MEN'S PROGRAM (BPRC)

WOMEN'S TRANSITIONAL CENTER (WTC)

The Butte Pre-Release Center Men's Program and the Women's Transitional Center have been providing a broad array of State-of-the-art, evidence-based community correctional programs and treatment milieus to thousands of adult male and female offenders since the programs were respectively established in December of 1983 (BPRC) and June of 1992 (WTC).

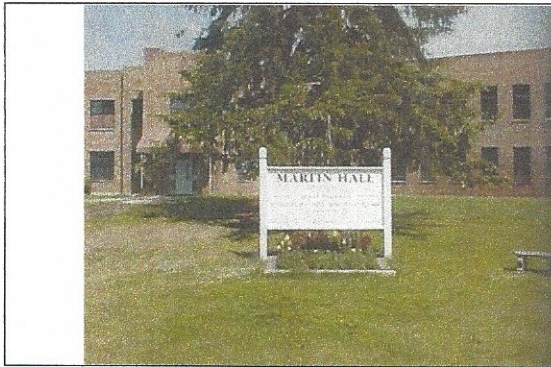
In 2021, there was a total of two allegation of a PREA related incident. This represents no increase in allegations compared to 2020. Those allegations were determined substantiated. The facility action plan from the prior year had been implemented and continued to focus on breaking the code of silence. Continuous training for staff and resident on PREA education has made reporting easier and without fear of retaliation.



THE CONNECTIONS CORRECTIONS PROGRAMS EAST

The Connections Corrections Programs East (Butte) continues to be one of the most dynamic and successful therapeutic communities in the country. Programs rely heavily on tradition, respect and standards. Family members are assured that they will complete their treatment in a safe and healthy environment. In return family members are expected to give 100% individual effort and be successful in their program. CCP East is a unique community correctional facility that serve the needs of the adult correctional population who are chemically dependent.

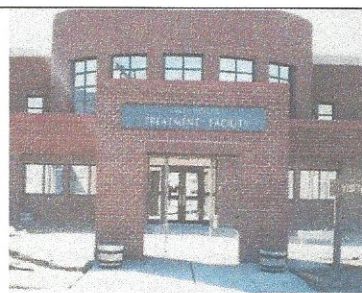
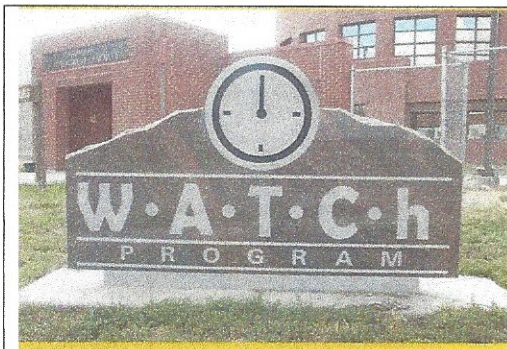
In 2021 there was one (1) PREA allegations made for CCP East, which is 100% increase compared to allegations made in 2020. It was determined to be unsubstantiated Staff and inmates continue to be provided with training and education regarding issues of sexual harassment and the means of reporting any PREA related incidents or concerns.



MARTIN HALL JUVENILE DETENTION FACILITY

CCCS Inc. has operated the Martin Hall Juvenile Detention Facility since November of 1999. Martin Hall is located on the campus of Eastern State Hospital in Medical Lake, Washington. The member counties are Adams, Asotin, Douglas, Ferry, Lincoln, Pen Oreille, Spokane, Stevens and Whitman Counties. Martin Hall provides valuable life skills, best practice programming and education to youth in custody.

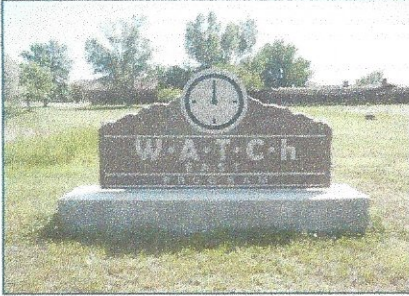
Overall, there were two (2) allegations in PREA allegations during 2021 compared to the year prior (none) which is an increase of two incidents.



WATCH WEST PROGRAM / CCP WEST PROGRAM

CCCS Inc. has operated the WATCH West Program since February of 2002. The WATCH program is an authentic Modified Therapeutic Community that requires structure, format, energy and commitment. WATCH mimics a community with all the same stresses and pitfalls and allows the Family Members to deal with these issues in a sober and pro-social manner under the guidance and direction of a dedicated and fully invested staff. Housed within the same facility includes the CCP West program which, along with its counterpart in Butte at CCP East, continues to be one of the most dynamic and successful therapeutic communities in the country. Programs rely heavily on tradition, respect and standards. Family members are assured that they will complete their treatment in a safe and healthy environment. In return family members are expected to give 100% individual effort and be successful in their program. CCP East and West are unique community-correctional facilities that serve the needs of the adult correctional population who are chemically dependent.

In 2021, there was an increase in allegations with a total of two (2) occurring in 2021 compared to 1 reported allegation in 2020. The allegations determined to be one substantiated involving inmate on inmate sexual harassment and the other allegation was unsubstantiated inmate on inmate. In response, additional training was provided to staff members regarding the importance of ongoing observation of all clients and appropriate response.



WATCH EAST PROGRAM

CCCS Inc. has operated the WATCH East Program since February of 2005. WATCH East is a six-month, intensive, cognitive behavioral based modified therapeutic community. The program assists family members (clients) in developing those skills necessary to create pro-social change, reduce anti-social thinking, criminal behaviors patterns and the negative effects of chemical addictions while integrating more fully into society.

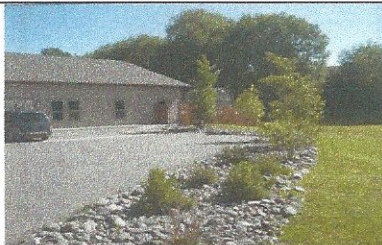
There has been Zero (0) PREA related allegation in 2021 compared to zero (0) allegation occurring in 2020.



Bismarck Transition Center

The Bismarck Transition Center (BTC) remains a positive influence in the process of transitioning North Dakota residents back into their respective communities. This is a community-based correctional facility for eligible, non-violent adult male and female offenders. BTC provides an alternative to direct release in order to help adult offenders develop skills necessary for a successful transition into the community. Since the BTC opened its doors in August of 2002, the BTC has grown and expanded its contracted beds and treatment programs several times over. Treatment program modifications have been implemented to meet the needs of the North Dakota Department of Corrections and Rehabilitation.

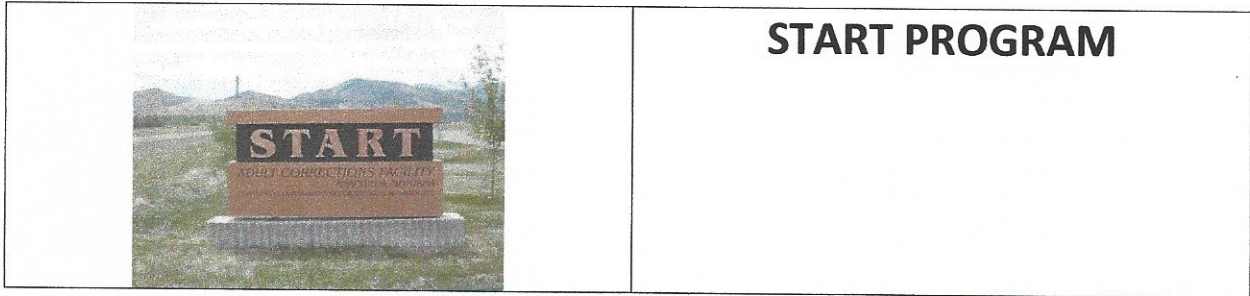
In 2021, there were three (3) PREA investigations compared to the two (2) from 2012. Of these allegations, one was determined to be substantiated, one unsubstantiated and the third was unfounded.



Gallatin County Re-Entry Program

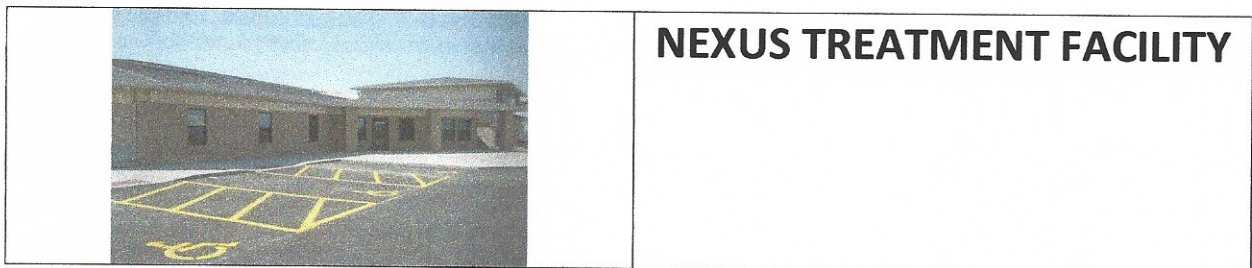
The Gallatin County Work Release Program (GCRP) began providing services on December 12, 2005. It is a multiple use facility (to include pre-release, work-release, drug court sanction, detention, and re-entry) for adult male offenders. This facility is a 40-bed facility designed to accommodate 40 male offenders from the Montana Department of Corrections.

There were no PREA investigations in 2021 for the Gallatin County Re-Entry Program.



Sanction Treatment Assessment Revocation and Transition (START) provides program services in a safe and secure environment, holds offenders accountable for their actions, and provides placement services that encourage offender accountability, enhance the community transition process and promotes public safety.

There were one (1) unfounded PREA investigation in 2021 compared to the one substantiated case reported in 2020.



This 80-bed methamphetamine treatment facility is located in Lewistown, Montana. NEXUS began accepting adult male offenders on June 1, 2007. The program is based on a therapeutic community model of treatment and includes a comprehensive array of correctional programming and services, including food service, transportation, routine medical and dental services, and various other programs such as anger management, family relationships, life skills, criminal thinking errors, and cognitive restructuring groups and counseling.

There were two (2) total investigations at the NEXUS Facility in 2021, one (1) was determined to be substantiated and the other unsubstantiated. In comparison to year 2020 there were five (5) PREA investigations. Which is a decrease by three In regards to the 1 substantiated allegation, the offender involved was removed from the facility.



Mike Thatcher, CEO
Community Counseling and Correctional Services, Inc.

3/17/2022
March 17, 2022



Marwan Saba, PREA Coordinator
Community Counseling and Correctional Services, Inc.

3/17/22
March 17, 2022